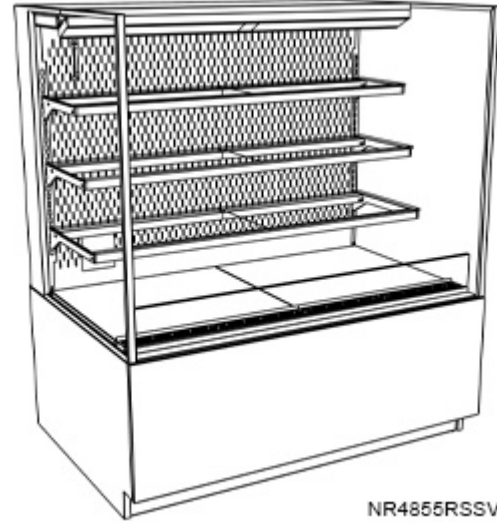


- **NR3655RSSV** 35-3/4"L x 33"D x 54-5/8"H
- **NR4855RSSV** 47-3/4"L x 33"D x 54-5/8"H
- **NR6055RSSV** 59-3/4"L x 33"D x 54-5/8"H
- **NR7255RSSV** 71-3/4"L x 33"D x 54-5/8"H

Included

- NOTE: Glass warranty only applicable to first point of delivery
- Breeze~E (Type-II) w/ EnergyWise s/c refrigeration
- (3) Levels of clear glass shelving removable and adjustable on 1" centers
- Blue Fin coated coil
- Compressor air intake from rear and out front panel at toe kick. Front panel cannot be blocked.
- Condensate pan (self-contained refig. only)
- Integrated average product temperature of 40°F or less
- LED top & shelf lights
- One piece formed ABS plastic tub
- One year parts & labor; 5 year compressor warranty

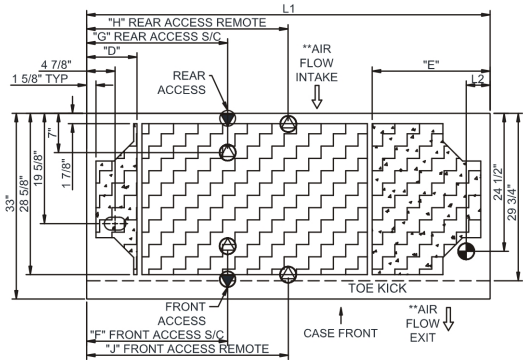


NR4855RSSV

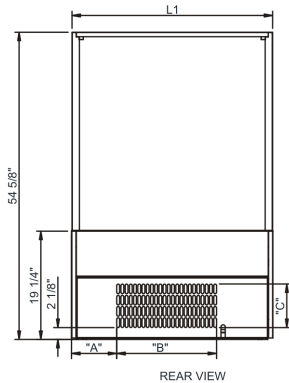
Specify	Standard Features	Additional Options
FRAME EXTERIOR COLOR	• Black	• Painted (non-stock colors, specify RAL#) • Painted (stock colors, specify RAL#) • Stainless steel
INTERIOR COLOR	• Black	• NOTE: Interior color must be FDA & NSF approved • Painted (stock colors, specify RAL#) • Stainless steel
PANEL EXTERIOR	• Laminated (non-premium) Confirm pattern/grain direction	• Laminated (premium) Confirm pattern/grain direction • Stainless steel
BASE SUPPORT	• Adjustable, locking casters	• 6"H stainless steel legs • Shims (standard w/ remote)
END PANEL LEFT	• Full end panel	• No end panel w/ synchronized defrost
END PANEL RIGHT	• Full end panel	• No end panel w/ synchronized defrost
LOWER FRONT PANEL	• Black	• Painted (stock colors, specify RAL#) • Stainless steel
LOWER REAR PANEL	• Black	• Painted (stock colors, specify RAL#) • Stainless steel
UPPER REAR	• Solid back panel	• Clear glass rear sliding doors • Reflective glass rear sliding doors
LIGHTS	• LED 3500K w/ frosted lens	• LED 3000K w/ frosted lens • LED 4000K w/ frosted lens
ELECTRICAL CONNECT	• 10' Straight blade power cord (self-cont.)	• 10' Locking power cord (self-cont.) • Electrical leads (remote)
REFRIGERATION	• Breeze~E (Type-II) w/ EnergyWise s/c refrigeration (rear access)	• Breeze~E (Type-II) w/ EnergyWise s/c refrigeration (front access) • Remote w/thermostat, solenoid & TXV (front access) • Remote w/thermostat, solenoid & TXV (rear access)
MISCELLANEOUS		• Rear door lock • Second year parts & labor warranty (excludes compressor)
ACCESSORIES		• 4"D full chimney rear wall spacer (front access only) • 4"D open rear wall spacer (front access only) • Clean Sweep® coil cleaner (n/a w/remote) • Clear acrylic security cover, removable, locking • Night curtain, retractable, non-locking

Intended Environment: Type II - Designed to operate in ambient conditions of 80°F and 60% relative humidity unless noted otherwise in system information below.		
Zone	Intended Product To Be Displayed	Warmest Avg Prod Temp ° F
1	Packaged refrigerated products	40

PLAN VIEW

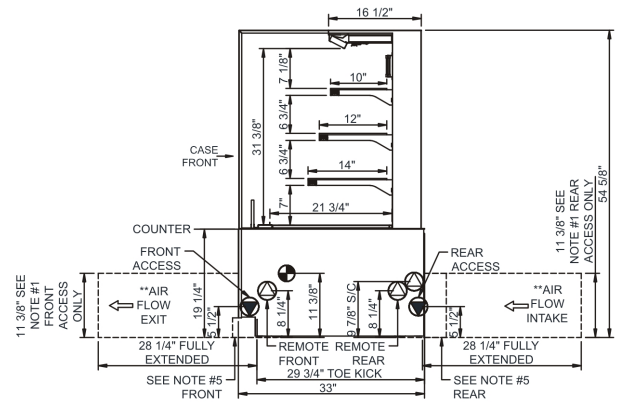


	"D"	"E"	"F"	"G"	"H"	"J"
NR3655RSSV	N/A	N/A	7"	7"	17 7/8"	17 7/8"
NR4855RSSV	N/A	N/A	12 3/4"	12 3/4"	23 7/8"	23 7/8"
NR6055RSSV	9"	9"	12 3/4"	24 3/4"	29 7/8"	29 7/8"
NR7255RSSV	9"	21"	25 1/8"	25 1/8"	35 7/8"	35 7/8"



	"A"	"B"	"C"
NR3655RSSV	8"	17 3/4"	7 3/4"
NR4855RSSV	7"	30 1/2"	7 3/4"
NR6055RSSV	13"	30 1/2"	7 3/4"
NR7255RSSV	25"	30 1/2"	7 3/4"

SIDE VIEW



- NOTES:
- 11 3/8" TALL, FULL WIDTH OF CASE OPENING IN CABINET OR COUNTER IS REQUIRED TO PULL OUT REFRIGERATION SYSTEM.
 - BACK OF COUNTER / CABINET MUST BE VENTED PROPERLY FOR ADEQUATE AIRFLOW TO CONDENSER.
 - **REPRESENTS REAR PULLOUT REFRIGERATION. AIR FLOW INTAKE AND EXIT DETAILS ARE REVERSED WITH FRONT PULLOUT REFRIGERATION OPTION.
 - SELF-CONTAINED ACCESS ONLY BY PULLING OUT CONDENSER UNIT.
 - 4" OPEN AREA CLEARANCE REQUIRED FOR AIR FLOW FRONT AND REAR OF CASE.

NOTE: ALL DIMENSIONS APPROXIMATE

- ELECTRICAL JUNCTION BOX (SUPPLIED WITH 6" LEADS OR POWER CORD).
- LOCATION OF DRAIN TUBE FOR REMOTE REF. ONLY (SUPPLIED WITH 3/4" OR 1 1/2" PVC TUBE).

- REFRIGERATION LINE CONNECTION.
- REMOTE FLOOR SINK & UTILITIES ACCESS AREA.

- SELF-CONTAINED CASE SERVICE ACCESS AREA.
- DRY CASE SERVICE ACCESS AREA.

Model Technical Specifications																
Model	L"	L1"	L2"	System Circuit Volts		Phs	Freq	Amps ***	Watts	Wires	NEMA Plug	SST	Conv. Rack BTU/H	Para. Rack BTU/H	Est Wt	
NR3655RSSV	N/A	35.75	4.13	Remote(Type I)	Circuit #1	110-120	1	60	1.20	54	2+G	Leads Single	20.00	2938	2720	750
				Remote(Type II)	Circuit #1	110-120	1	60	1.20	54	2+G	Leads Single	20.00	3650	3380	
				Self-Contained (R513A)	Circuit #1	110-120	1	60	16.00	1,187	2+G	5-20P or L5-20P	N/A	N/A	N/A	
NR4855RSSV	N/A	47.75	4.13	Remote(Type I)	Circuit #1	110-120	1	60	1.56	82	2+G	Leads Single	20.00	3888	3600	950
				Remote(Type II)	Circuit #1	110-120	1	60	1.56	82	2+G	Leads Single	20.00	4838	4480	
				Self-Contained (R513A)	Circuit #1	208-240	1	60	11.11	1,634	2+G	6-15P or L6-15P	N/A	N/A	N/A	
NR6055RSSV	N/A	59.75	4.13	Remote(Type I)	Circuit #1	110-120	1	60	1.60	92	2+G	Leads Single		4860	4500	1,000
				Remote(Type I)	Circuit #1	110-120	1	60	1.60	92	2+G	Leads Single	20.00	4860	4500	
				Remote(Type II)	Circuit #1	110-120	1	60	1.60	92	2+G	Leads Single		6026	5580	
				Self-Contained (R513A)	Circuit #1	208-240	1	60	12.00	1,896	2+G	6-15P or L6-15P	N/A	N/A	N/A	
NR7255RSSV	N/A	71.75	4.13	Remote(Type I)	Circuit #1	110-120	1	60	1.64	105	2+G	Leads Single	20.00	5789	5360	1,100
				Remote(Type II)	Circuit #1	110-120	1	60	1.64	105	2+G	Leads Single	20.00	7193	6660	
				Self-Contained (R513A)	Circuit #1	208-240	1	60	12.00	1,909	2+G	6-15P or L6-15P	N/A	N/A	N/A	

*** Does not include electric defrost on freezer models.

Regulatory Approvals:

All Models
 Accordance with AHRI Std 1200
 ETL Listed to UL 471
 ETL Listed to CAN/CSA 22.2 No. 120
 ETL Sanitation to NSF/ANSI 7



In Accordance with
AHRI Std 1200

DOE 2017
 Energy Efficiency
 Compliant

Important Notes:

- 1) ELECTRICAL NOTE: If GFCI is required, a GFCI breaker MUST be used in lieu of a GFCI receptacle
- 2) Back side of counter must be open or vented the full length of the unit to allow proper ventilation for the refrigeration system.
- 3) Glass warranty only applicable to first point of delivery.

WARNING: This product can expose you to chemicals, including Urethane (Ethyl Carbamate), which are known to the State of California to cause cancer and birth defects or other reproductive harm. For more information go to www.P65Warnings.ca.gov.